



# SPATIAL CONSULTANTS



## Delivering Positional Advantage

We help organisations to improve operations through the intelligent use of location technologies. Prior to establishing the company in 2007, West Cumbrian founder Graham Morgan, developed location based solutions for organisations in Sweden, Australia, the Middle East, America and Canada for over 15 years. Modern communication links now enable us to serve clients both locally and globally from our base on the edge of the Lake District.

### Enabling improvements in:

- Efficiency
- Performance
- Business Intelligence
- Communication
- Technology assurance
- GIS project support



## Improving operations through the intelligent use of locational technologies

We help our clients to make better decisions, enabling them to become more efficient, responsive and informed. We provide expertise in the use of locational technologies to enable the integration of disparate information, spatial analysis, and the creation of digital maps and expressive visualisations to communicate and inform.

### Business Services

- Strategic advice & assurance
- GIS assessment & strategy development
- Business & systems analysis
- Solution architecture
- Project definition & management
- Spatial data modelling, profiling & migration
- Application development
- Spatial analysis, Visualisation & digital cartography

## Expertise

The company is vendor neutral and maintains expertise in all major GIS suites including: ESRI ArcGIS, ArcSDE, MapInfo, FME, Oracle Spatial, Microsoft SQL Server, Manifold, Smallworld. Open source toolsets such as Quantum GIS, Geoserver, OpenLayers and GRASS. Supporting toolsets include mainstream IT platforms such as Microsoft .NET, Java, Python & SQL

### Contact:

Graham Morgan  
Managing Director

19 Simonscales Lane · Cockermouth  
Cumbria · CA13 9DH · United Kingdom

07717 539412

gmorgan@spatialconsultants.com

www.spatialconsultants.com







**SPATIAL**  
CONSULTANTS

**BRITAIN'S ENERGY COAST™**  
**BUSINESS CLUSTER**



## Core Values: Innovation, Integrity, Passion

We love what we do; we have worked on some extremely challenging projects and have been privileged to meet some inspirational people. We always notice how the people that inspire us are passionate about what they do. We believe that passion is contagious and that ultimately it is key to a project success.

### Community Involvement

We support the Cumbria Community Foundation and the Friends of the Lake District as local charities and are members of the Cockermouth Chamber of Trade. We have engaged with local universities to deliver lectures, provide student placements and employ graduates.

## Partnering in the Supply Chain

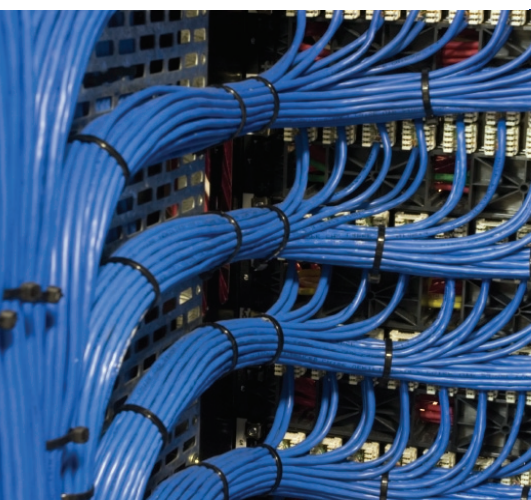
We believe in collaborative working to provide the best team for each project. We are signatories of the Supply Chain Charter and are members of the Quality Guild. We post relevant corporate policies (Quality, Health & Safety, Environmental, Security, etc.) on our public website. We are also members of Britain's Energy Coast Business Cluster and serve on the cluster management team to encourage collaboration between businesses.

### Expertise and Skills development

Our staff are highly educated and skilled professionals with a broad range of experience. We maintain an active network of associates and advisors who strengthen our team for specific projects. In supporting development within our industry, Graham Morgan chairs the Northern Group of the Association for Geographic Information (AGI) and is a member of the Geomatics Industrial Advisory Panel for Newcastle University. We speak regularly at industry events.



Company registration: 6276827  
Established: 2007  
VAT registration: 918356504  
Location: N 54° 66.367 W 3° 36.506



## Our Clients

Our clients include: Defra, Transport for London, Hadrian's Wall Heritage Ltd, Copeland Borough Council, Lancashire Sports Partnership, British Waterways, Comcast Cable. A range of case studies are described on our website.

### We help our clients in achieving a broad range of goals:

- Make the most efficient use of the London transport networks
- Manage telecommunications networks
- Process planning applications quickly and fairly
- Understand the impact of policies on sports participation